

Soil Erosion and Sedimentation Control Why?

The problem of erosion and sediment control has plagued us since colonial times. Early land clearing, logging, and farming damaged many streams and rivers. Due to the severity of the problem in the early 1930's, a nationwide soil conservation movement started to reduce the erosion problem.

In recent years, construction activity has caused serious erosion and sedimentation problems in the eastern Upper Peninsula. With modern equipment and technology, we've cleared land to develop roadways, farms, and residential, industrial, commercial, and recreational facilities. With so many miles of attractive shoreline along Lake Superior, the St. Mary's River, Lake Huron, and our beautiful inland lakes and streams, Chippewa and Mackinac Counties continue to attract people to invest in building their dream homes or cabin retreats. In many cases, these activities can result in erosion and sedimentation damage to our treasured land and water resources.

Damage from erosion and sediment affects all of us - loss of fertile topsoil; clogged ditches, culverts and storm sewers; muddy or turbid lakes and streams; damage to plant and animal life; damage to aquatic habitats; and reduced recreational value of our water resources.

The District administers the Soil Erosion and Sedimentation Control (SESC) program for Chippewa County. Part 91 of the Natural Resources and Environmental Act 1994 (Public Act 451) provides the rules for administering the program.

According to Part 91, a land owner or designated agent who contracts for, allows or engages in an earth change in this state, which disturbs one or more acres of land or which is within 500 feet of the water's edge of a water body shall obtain a soil erosion and sedimentation control permit. It's a simple process that provides a proven way to monitor construction and excavation activity near our sensitive waterways.

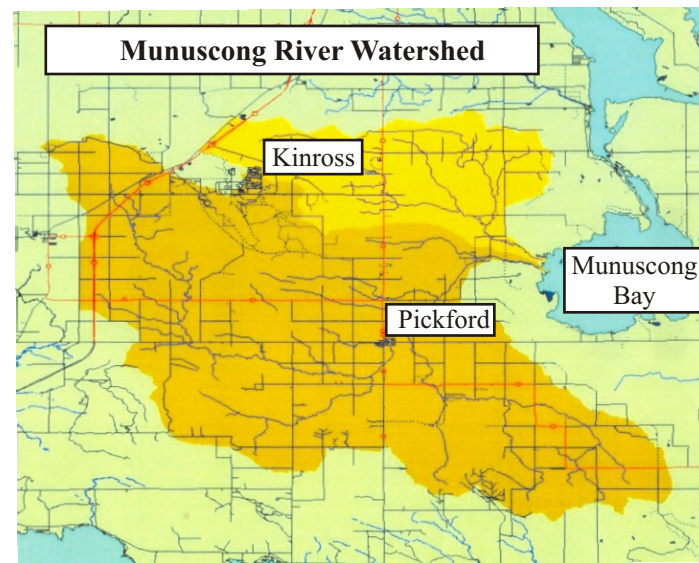
Responsible development of our shoreline properties will provide long term benefits for all of us who enjoy fishing, boating, swimming, and clean water. Any landowner planning to develop a parcel (i.e. build a garage, house, or addition; install or repair a septic system; excavate or make any earth change) should check with the Chippewa County Building Department or our office to determine whether a SESC permit is needed before starting their project. Additional information about the program and application packets can be found on the District's web site or you can call our office to discuss your planned improvement.



Munuscong River Watershed Project

The Munuscong River Watershed Planning Project is located in central Chippewa County. The Munuscong Watershed consists of approximately 149,000 acres, dominated by forest (56%) and agriculture (34%) with 10% consisting of urban, surface water, and fallow areas. The watershed includes tributaries: Little Munuscong River, and School, Desormeaux, Fletcher, Taylor, Hannah, Rapson, and Parker Creeks.

The main goal of the project will be to investigate the non-point source pollution concerns in the Munuscong River Watershed and address how those concerns could be corrected in a watershed management plan. This plan will build upon ongoing water quality efforts, soliciting assistance and information from existing work and partners to help the community improve surface and



ground water quality in the Munuscong River Watershed. The project will educate the community about surface water quality and involve the community with water quality management to help assure sustainability of the project. The project will compile all the existing water quality data for the watershed and activate partners to move toward protecting water quality for the region and the Munuscong River.

The project is well underway, with the start of the field season in full swing and sampling being conducted within the watershed. Currently projects are working on completing a road stream crossing inventory and collecting water quality samples looking at multiple parameters including: oxygen levels, pH, metals, E. coli, and more. Recently launched is a website for the watershed project, where updates to the project will be posted, educational material, watershed activities, and much more. The website link is www.munuscongwatershed.org. Also under development is a social survey that is being conducted through Lake Superior State University Center for Social Research. Look for the survey in the mail in the coming weeks, your opinion and information will be important in helping this project be successful.

Look for further information to be coming in the future months on the progress of accomplishing these objectives. If you are interested in getting involved in the planning process, or have questions you may contact me at P.O. Box 578, Cedarville, MI 49719, phone (906) 484-3031, or e-mail corey.jerome@macd.org

ORDER FORM

Name: Day Phone:

Address: Evening Phone:

City: State: Zip code:

Signature: Date:

Quantity	Species	Cost
Sales tax		
Total		

Mail to:
Chippewa/ East Mackinac
Conservation District
2847 Ashmun St,
Sault, MI 49783

Make checks payable to
CEMCD

There are no handling charges on fall sale orders.

There is a \$10.00 late fee if trees aren't picked up.

Please call if you can't pick up your order from 8am to 6 pm on Friday. We'll make other arrangements.

Cut here for order form

Cut here for order form

Fall 2010 Tree Sale

Easy-to-Plant Plugs for
Windbreaks * Wildlife * Aesthetics

Plug stock is seeded in trays. The plug is extracted from the tray and soil is left on the roots. This protects the tree during hand-lining and planting. Plug stock tend to have a higher survival rate than bare root stock.

VARIETY	SIZE	\$ for 10	\$ for 20	\$ for 50	\$ for 100	\$ for 500
Balsam Fir Plugs Norway Spruce Plugs Red Pine Plugs White Pine Plugs White Spruce Plugs Tamarack Plugs	6-10"	\$5.00	\$8.00	\$18.00	\$34.00	\$157.00

BOOKS FOR SALE

Stan Tekiela nature series
**Trees of Michigan &
Birds of Michigan** - \$12.95ea
Wildflowers of Michigan - \$16.95

Invasive Plants from MSUE- \$10.00

Books by Neil Moran
North Country Gardening - \$16.95
"From Store to Garden"- \$7.00 **NEW**

Order by September 15
Pick up orders on Friday, October 8
8am-6pm
at the District Office
2847 Ashmun Street
Sault Ste. Marie



Larger White Spruce Trees-
30"- 36" tree- \$21.00
40"- 48" tree- \$26.00
Roots are wrapped in soil and burlap.

ALSO AVAILABLE
Tree Planting Bars - Great for planting seedlings. Each bar has a footstep and handle. Weight approx. 7 pounds. Price \$25.00.


Pro Tree Protectors protect seedlings from harmful animals and create a mini-greenhouse. Comes with a stake. \$5.00 each.

Tree Mats provide 3 - 5 years of weed control. 3' square. Comes with staples. \$8.00/10

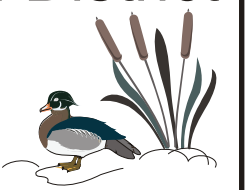
Chippewa/East Mackinac
Conservation District
2847 ASHMUN STREET
SAULT STE. MARIE, MI 49783

NON- PROFIT
ORGANIZATION
U.S. POSTAGE
PAID
PERMIT NO. 330

Chippewa / East Mackinac Conservation District



Our mission is to assist with land use and management
Through education, community projects and services.



Conservation Districts



FALL TREE SALE

Sale Date: Friday, October 8
Last Day to Order: September 15
Pickup is at the District Office,

Tree Descriptions

Balsam Fir (*Abies balsamea*) - A soft, waxy, deep green aromatic true fir that enjoys sun and likes cool, moist well drained soil conditions. Provides good wildlife cover and is shade tolerant. Grows 40-60'.

Norway Spruce (*Picea abies*) - Moderately fast-growing, long-lived tree to 85 feet. Prefers full sun, but will tolerate some shade. Grows well on a variety of soils but does best on rich, acid, moist well-drained soils. Root system is very shallow on clay or poorly-drained soils. Mature tree has vertically drooping branches and conical spire-topped crowns.

Red Pine (*Pinus resinosa*) - Fast-growing, long-lived tree to 80 feet. Shade-intolerant. It grows best on well-drained sandy loam soil. Does not tolerate a high water table. Excellent tree for reforestation on poor sandy sites. Important timber tree with distinctive reddish bark.

Tamarack (*Larix laricina*) - also called Larch. Hardy, fast growing found in swampy areas or along lake shores. Foliage is bright green with needles that turn golden yellow in fall. Heights of 40 to 80 feet.

White Pine (*Pinus strobus*) - A long-lived moderately, fast-growing tree which reaches heights of 80-100 feet. Moderately shade-tolerant. Seedlings grow best in partial shade. Best adapted to moist sandy loam soils but will grow on a variety of sites from swamp to dry sand. Tall straight stemmed picturesque tree provides cover and food for wildlife.

White Spruce (*Picea glauca*) - Medium-sized to large tree reaching heights of 80 feet. Moderately shade-tolerant but grows best in full sun. Found on clay, sand and loam soils where moisture conditions may vary from moist to dry. Prefers well-drained sandy loams. Resistant to drought. Straight stemmed and narrow crowned.

Conservation District Board of Directors

Forbes McDonald- Chairman

Orv Kabat- Vice Chairman

Tina Love- Treasurer

Tom Allan & Jane Bishop- Directors

District Staff

Dustine King- Executive Director

Corey Jerome- Watershed Project Manager

Wendy Wagoner- EAB Supervisor

& CWMA Project Manager

Erin Satchell - Civil Engineer

Hank Lotoszinski- SESC Agent & WebMaster

Barbara Chaplin - Education Coordinator

Brad Sauve- EAB Forester

Natural Resource Conservation Service Staff

Kent Dankenbridge- District Conservationist

Pat Carr- Soil Conservation Technician

District On Line

In September of 2009, the Chippewa/East Mackinac Conservation District rolled out its new web site www.chipmackconservation.org. Since then, we've had over 12,000 hits from visitors interested in getting information about programs and services offered by the District.

The new site provides up-to-date information about District programs, projects, events, and activities. The site features a mapping tool with a variety of maps including base maps, hydric soils, slope, water table, drainage class, and prime farm lands.

We recently added a page that is dedicated to the activities of the newly established EUP CWMA (see story below). If you are interested in participating in the program, you can visit the site to get dates, times and locations of upcoming events.

The site has a "news" page with a resource library of informational materials such as flyers, pamphlets, and reports prepared by District staff. Links to other sites providing information and services related to resource conservation are listed for your use.

An "events" page is updated regularly to give you dates, times and locations of meetings, events, and activities.

We invite you to check out the site and provide comments back to us about what you like and what you want to see posted on the site.

DISTRICT TARGETS INVASIVE WEEDS

RRIP-IT-UP which stands for "Rapid Response Invasive Plant Intervention Team of the Upper Peninsula" is a grant-funded project. The District has partnered with the Upper Peninsula Resource Conservation & Developing Council to support the cause of helping reduce the amount of invasive plants in our area.

Invasive plants are described as any plant that has been introduced to an area that chokes out native plants. They have rapid growth and reproductive rates that allow them to quickly invade new habitats. Invasive plants arrive in all sorts of ways. Birds and wind can carry seeds miles away. Boats carry aquatic invasive plant from lake to lake. Some invasives are brought into an area for land-scape purposes by people who don't realize they will overtake the natural areas outside garden borders.

Currently, CEMCD is looking for a suitable site to conduct a pilot project on controlling invasives. We want to target an invasive species that is not prominent in our area yet. We are also looking for volunteers to join our Rapid Response Teams. For more information, contact us at (906) 635-1278.

RRIP-IT-UP is funded by a grant from the National Fish & Wildlife Foundation which includes funding from the US Fish & Wildlife Services, US Forest Service, and the Environmental Protection Agency.



Cooperative Weed Management Area formed in tri county area.

The District, in partnership with natural resource agencies and environmental organizations across the Upper Peninsula, has formed the EUP Cooperative Weed Management Area (CWMA). This CWMA covers Luce, Mackinac and Chippewa Counties. The project is funded through a Great Lakes Restoration Initiative Grant with the US Forest Service.

The purpose of a CWMA is to encourage and formalize the cooperative relationship necessary for effective management, coordination and implementation of invasive, terrestrial and aquatic plant species (invasive weeds) programs. We will provide partnership and collaborative efforts that will enhance current activities and initiatives. We will take a proactive approach to controlling non-native invasive plants on a landscape scale.

Our top ten invasive species list (not prioritized) is as follows: Purple Loosestrife, Japanese Knotweed, Spotted Knapweed, Leafy Spurge, Eurasian Milfoil, Canadian Thistle, Garlic Mustard, Phragmites, Glossy Buckthorn and Scotch Pine. If you have any of these species and would like to help us map them please contact the coordinator. We are specifically looking for the Japanese Knotweed. Educational kits that focus on our top ten invasives are available to groups.

We need help mapping invasives in all three counties. Any parties interested in becoming a partner in this venture or wanting specific dates and times of the projects, please contact the coordinator, Wendy Wagoner at Creekside@cedarville.net or (906) 440-7675.